

Welcome to the introduction programme!

Engelsk



IMDi
Integrerings- og
mangfoldsdirektoratet

What is the introduction programme?

The introduction programme is a training programme intended to prepare you for participation in Norwegian working life. All refugees between 18 and 55 years of age who arrive in Norway shall participate in the introduction programme. The same applies to family members who arrive in the country at a later date.

Through the introduction programme, you will learn the Norwegian language and gain an understanding of Norwegian society. You will receive training and obtain knowledge about Norwegian working life. You will also receive education, if needed. A goal is for you to obtain a job or an education once you have completed the programme.

The introduction programme shall commence as early as possible and no later than three months after you are settled in your municipality.

The introduction programme is a full-time programme.



Expectations of you

It is important that you arrive prepared for the lessons and that you take responsibility for learning the content of the programme.

Your programme advisor and teacher will help you. They can provide you with advice and guidance. If you have any questions along the way, it is important that you speak with them.

Financial support

You will receive money while you are participating in the introduction programme. This support is referred to as “introduction benefits”.

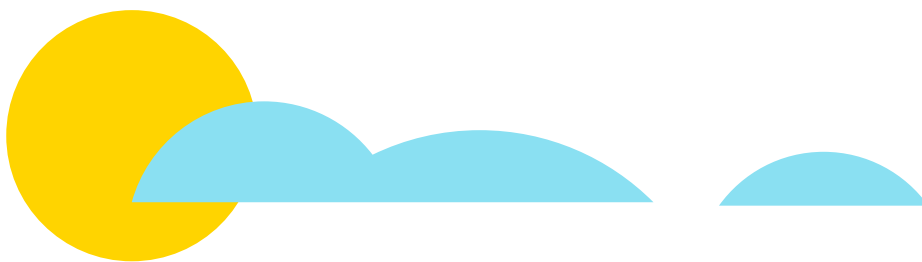
The introduction benefits entail that you do not have to earn an income while you are participating in the programme.

If you are under 25 years of age and are living with your parents, you will receive a somewhat smaller amount.

You are required to pay tax on your introduction benefits. Tax is automatically deducted from your payments.

If you are receiving other financial support, the amount you receive may be reduced. This does not apply to child benefits or cash-for-care benefits, or if you are earning money outside of the programme.

It is the municipality that disburses the introduction benefits. If you provide incorrect information, the municipality may demand that you repay the introduction benefits.



Holidays, absence and leaves of absence

You are entitled to five weeks' holiday per year. You are also entitled to time off in connection with sickness, pregnancy or childbirth, or if, for other important reasons, you are unable to participate. We refer to this as a “leave of absence”. You must ask your programme advisor in order to be granted a leave of absence.

If your absence is not approved by your programme advisor, your introduction benefits will be deducted, and you will have less time in the programme.

If you discontinue your participation in the programme, you will lose the right to participate at a later date. You will also lose your introduction benefits.

What will the introduction programme contain?

The introduction programme has some content that is common to all participants, while other content is adapted to you.

- **All participants shall learn the Norwegian language. Your teacher shall establish a goal for your training in Norwegian language. This Norwegian language goal depends on your previous schooling.**
- **All participants shall also learn about Norwegian society. This training is intended to make it easier for you to participate in society.**
- **All participants shall participate in the course “Livsmestring i et nytt land” (Mastery of life in a new country). This course is intended to make it easier for you to make good choices in Norway and influence your own situation. You will also learn how you can receive help when needed.**



If you have or are expecting children, you will also receive parental guidance. Through this guidance, you will learn what it is like to be a parent in Norway and what services are available for you and your children.

The introduction programme will also include content that is adapted to you and your goals. This may involve unpaid participation in working life or education. Many participate in working life and in education during the time they are part of the introduction programme.

You and your programme advisor shall jointly draw up a plan for the content of your introduction programme and its duration.



Career guidance

Before you commence the introduction programme, you will receive career guidance. This is guidance regarding your opportunities for education and work in the future.

The career guidance is based on information regarding your work experience and education from your home country. This should have been assessed before you receive career guidance.



End goal for the introduction programme

After you have received career guidance, you and your programme advisor shall determine what you should achieve over the course of the introduction programme. This may be a goal to enrol in higher education or a goal to find a job. It may also be a goal to complete all or part of an educational pathway. This is referred to as an “end goal”.

The end goal for the introduction programme is determined based on your work experience and education from your home country, and what wishes you have regarding work in the future.

What is the duration of the introduction programme?




It is your end goal that will determine the duration of the introduction programme.

If you already have upper secondary education from your home country, and the end goal is to qualify for higher education or to find a job, the introduction programme may take up to six months to complete.

If the end goal is to complete upper secondary education, the introduction programme may take up to three years to complete.

If the end goal is to find a job, the introduction programme may take up to two years to complete.

In some circumstances, it may be possible to extend the duration of the programme.

END GOAL	DURATION OF THE PROGRAMME	
Completion of upper secondary education	Up to three years	
Work, or qualification for high education	Up to six months	
Work or completion of parts or all of primary and lower secondary education or upper secondary education and training	Up to two years	

**We wish you the best of luck
in the introduction programme!**



Utgitt av Integrerings- og mangfoldsdirektoratet (IMDi) – 2021.

www.imdi.no